



# MEXUM<sup>®</sup>

EMPOWERING DIGITAL PRINTING SOLUTIONS

- Sublimation Printers
- Direct to Fabric Belt Printers
- Foil Printers
- Heat Transfer Machines
- DTF Printers
- Sublimation / Reactive / Pigment Inks
- Sublimation Printing Papers

YOUR TRUSTED PARTNER  
FOR HIGH PERFORMANCE  
MACHINES AND PREMIUM INKS

**MEXUM TEXINK PVT. LTD.**

Established in 2016, Mexum has been a trustable supplier in the digital textile printing industry in India. With a foundation rooted in expertise and innovation, we specialize in importing cutting-edge digital printers from China and high-quality sublimation inks from Korea.

Since venturing into the market in 2016, Mexum has steered its name in becoming a trustworthy supplier in the digital printing industry. We take pride in our journey marked by commitment, to excellence and customer satisfaction.

At Mexum, we offer state-of-the-art digital textile printing machines tailored to meet the dynamic demands of the industry. Our imported printers are sourced from leading manufacturers in China, ensuring the latest technology and reliability.

To complement our advanced printing machines, we import top-grade sublimation inks from Korea and China. This strategic sourcing allows us to provide our clients with a comprehensive solution for vibrant and long-lasting prints.

A crucial element of our success is our dedicated service team with over 8 years of experience. We prioritize customer support, ensuring that our clients receive prompt and efficient assistance, making their experience with our products seamless.

At Mexum, our vision is to continue driving innovation in digital textile printing, empowering businesses in India with the latest technology and unparalleled service.

Join us in transforming the fabric of the industry with Mexurm



# FD-1924

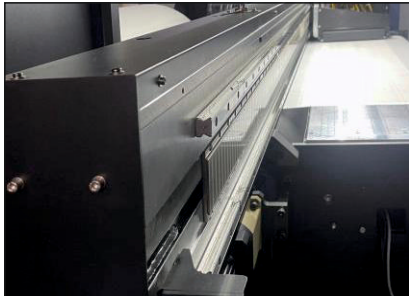
960 m<sup>2</sup>/h  
MAX PRINTING SPEED



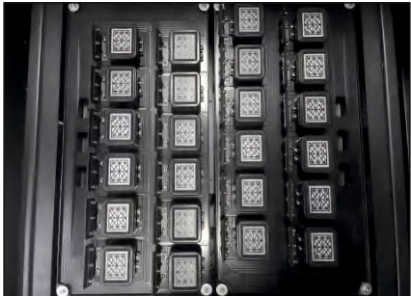
## Product Details



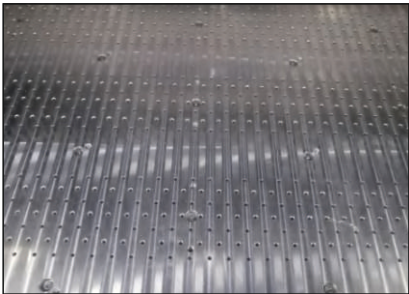
TTHK super silent SS+ grade linear guide



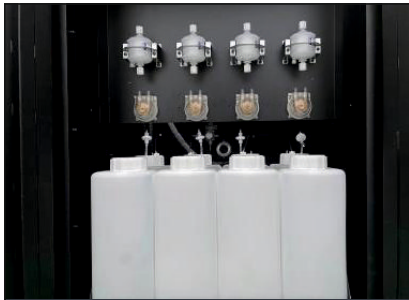
Thickened steel beam



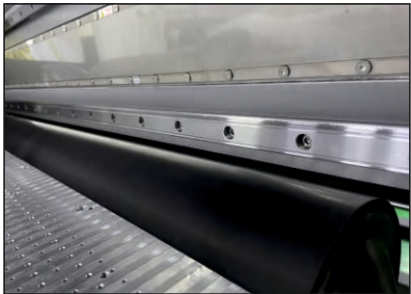
24 nozzles scraping ink in one go



Fully enclosed suction platform design



Continuous ink supply system



Pneumatic rubber roller lifting structure

## Product Parameter

Printer Model	FD-1924	
Print Head	Epson I3200-A1      Print heads : 24 (2*12) Automatic cleaning,automatic flash spray moisturizing function.	
Print Resolution	3200DPI	
Print Speed	V240X1800    1PASS 960 m <sup>2</sup> /h V240X3600    2PASS 480 m <sup>2</sup> /h	
Print Width	1900mm	
Ink Type	Sublimation ink	Color : CMYK
Print Media	Sublimation paper	
Operate System	Win7 64, Win10	
Computer Configuration	Hard disk: 500G , ATI Discrete Graphics, DVD ROM, Gigabit LAN, 4G memory, CPU: Intel quad-core i7 processor	
Work Environment	Temperature: 18 -30℃, humidity : 35%-65%.	
RIP Software	Maintop6.1, Photoprint, ONYX, NeoStampa	
Document Format	JPG, TIFF, PDF etc	
Power	220V, 100A,	
Drying method	External intelligent air-heat integrated dryer	
Standard configuration	Intelligent drying system, integrated three-color lamp alarm system, continuous ink supply system, ten thousand meters unwinding negative pressure device, magnetic levitation motor module, cloud management software	
Size and weight	Appearance size	4000mm*1000mm*1870mm
	Ten thousand meters retracting base	2575mm*1061mm*1115mm
	Package size	Print unit : 4150mm*1370mm*2140mm Qing seat unit : 2700mm*1100mm*1365mm
	Machine weight	Gross weight:1930KG+390KG    Net weight: 1540KG

## Scope of Application



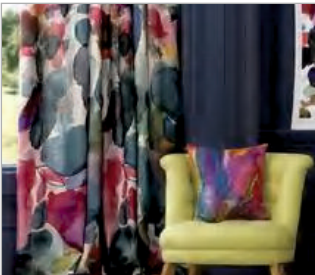
Swimsuit



Bathroom three-piece suite

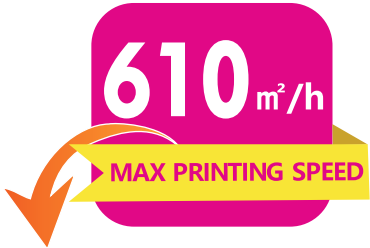


Carpet



Curtain

FD-61915-E



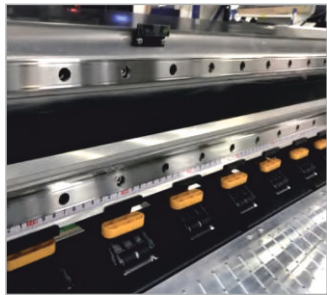
Printer Model	FD-61915E	FD-61915E-A
Print Head	Epson I3200-A1 Automatic cleaning,automatic flash spray moisturizing function. Print heads : 15	
Print Speed	High speed mode 240X1800 1PASS: 610m²/h 240X3600 2PASS: 300m²/h  High precision model 360X1800 1PASS: 430m²/h 360X3600 2PASS: 220m²/h	High speed mode 240X1800 1PASS: 610m²/h 240X3600 2PASS: 300m²/h  High precision model 360X1800 1PASS: 430m²/h 360X3600 2PASS: 220m²/h
Print Width	1900mm	
Ink Type	Sublimation ink      Color : CMYK	
Matching device	Intelligent drying system, liquid level alarm system	
Print Media	Sublimation paper	
Operate System	Win7 64, Win10	
Computer Configuration	Hard disk: 500G , ATI Discrete Graphics, DVD ROM, Gigabit LAN, 4G memory, CPU: Intel quad-core i7 processor	
Work Environment	Temperature: 18 -30℃, humidity : 35%-65%.	
RIP Software	Maintop6.1, Photoprint,	
Document Format	JPG, TIFF, PDF etc	
Power	210-230VAC 20A	
Drying method	External intelligent air-heat integrated dryer	

FD-61915E-A

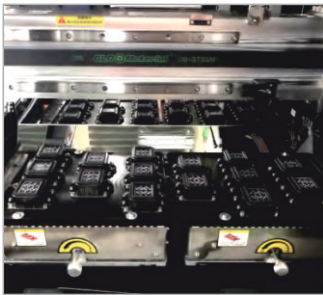


Printer Model	FD-61915E	FD-61915E-A
Moisturizing mode	Fully sealed automatic moisturizing and cleaning	
Power	Input voltage : 210-230VAC 70A Total power : 15.5KW Drying system : maximum power 10800W	Input voltage :210-230VAC 68A Total power :15KW Drying system: maximum power 10800W
Machine size	Appearance size: 3725mm*1455mm*1810mmn Packing size: 3870mm*1320mm*2020mmm	Appearance size: 3757mm*1476mm*1962mm 3757mm*2320mm*1962mm(万米) Packing size:3920mm*1150mm*2110mm
Machine weight	Gross weight: 1640KG+310KG Net weight : 1130KG	

Product Details



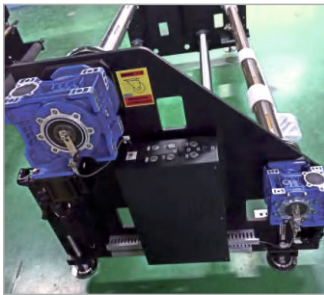
THK silent guide rail



Advanced intelligent nozzle cleaning and moisturizing device



Linear motor + magnetic grid drive



Ten thousands meter winding and unwinding system



FD-6198E-A

370 m<sup>2</sup>/h  
MAX PRINTING SPEED



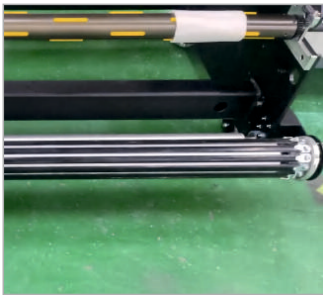
Product Features

- According to different printing supplies can be freely adjusted nozzle height, wide range of applications, easy adjustment; Both ends are equipped with anti-collision devices, giving the nozzle more comprehensive safety protection
- Unwinding system has the characteristics of large loading weight, long service life, uniform force of paper unwinding and short operation time of inflation and deflation.
- Advanced intelligent nozzle cleaning and moisturizing device, providing safe and convenient nozzle cleaning and maintenance functions, more convenient operation and maintenance.
- U.S. imports of fluorine rubber pressure paper wheel, prevent static electricity,no ink flying, more accurate printing size, the unique individual lifting device of the platen ready to deal with the phenomenon of partial paper bulging during the printing process.
- Japan THK silent linear guide, smooth movement, longer life, effectively reduce the resistance and noise in the operation of the ink car in high-speed movement

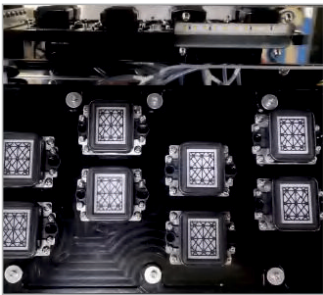
Product Details



Anti-collision trolley frame



Air expansion shaft type winding and unwinding system rubber strip roller



Intelligent nozzle cleaning and moisturizing device



U.S. imported fluorine rubber pressure paper wheel

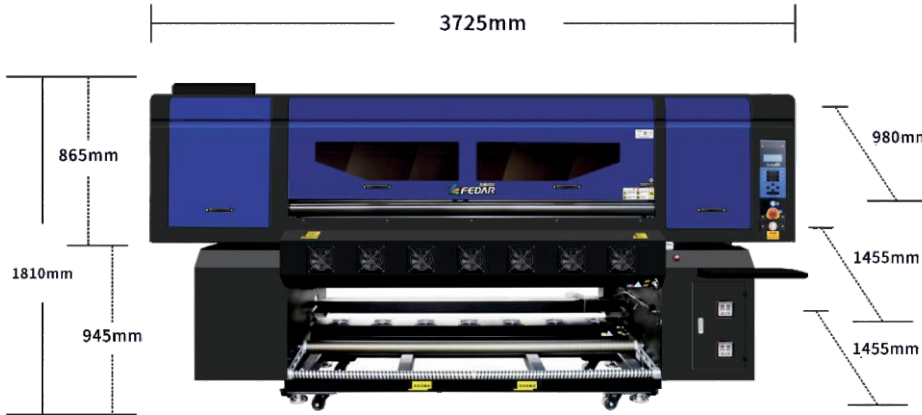
Product Parameter

Printer Model	FD-6198E-A	
Print Head	Epson I3200-A1	Print heads : 8 Automatic cleaning,automatic flash spray moisturizing function.
Print Resolution	3200DPI	
Print Speed	360X1200 1PASS:370m <sup>2</sup> /h 360X2400 2PASS:185m <sup>2</sup> /h	
Print Width	1900mm	
Ink Type	Sublimation ink	Color : CMYK
Print Media	Sublimation paper	
Operate System	Win7 64, Win10	
Computer Configuration	Hard disk: 500G , ATI Discrete Graphics, DVD ROM, Gigabit LAN, 4G memory, CPU: Intel quad-core i7 processor	
Work Environment	Temperature: 18 -30℃, humidity : 35%-65%.	
RIP Software	Maintop6.0, Photoprint,	
Document Format	JPG, TIFF, EPS, PDF etc	
Power	210-230VAC 43.5A	
Drying method	External intelligent air-heat integrated dryer	
Moisturizing mode	Fully sealed automatic moisturizing and cleaning	
Matching device	Intelligent drying system, liquid level alarm system, waste ink alarm system	

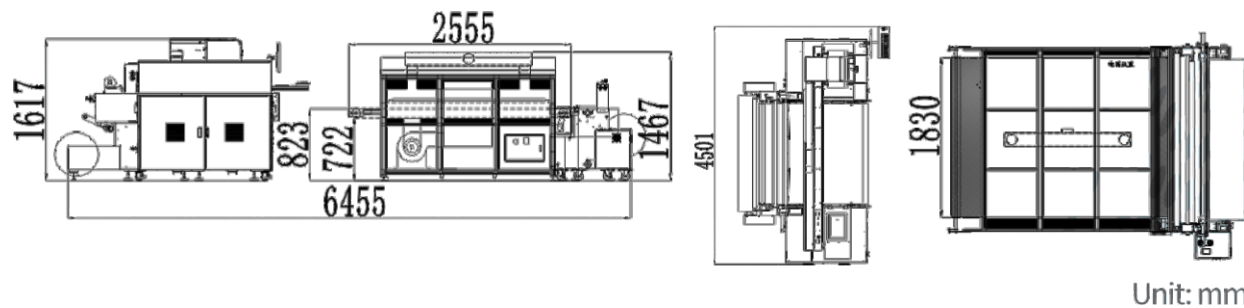
Product Size

6198E-A  
Printer Size

Externaldimension :  
3725mm\*1385mm\*1810mm  
Packing size  
3870mm\*1320mm\*2020mm  
Net weight : 990KG  
Gross weight : 1300KG+310KG



# MX-1816



Suitable for all kinds of knitted / woven fabrics  
(Cotton,silk,wool,polyester,acetate,nylon,blended fabric,linen,etc)

## Product Parameter

Printer Model	MX-1816
Print Head	Ricoh GENSE/GEN6
Fabric Conveyance Mode	Adhesive belt with cleaning and heating system
Effective Print Width	1800/2200/2600mm
Speed	Gen6 1 pass:540m3/h 2 pass:330m2/h
Maximum Printing Resoution	2400 DPI
Printing Part Introduction	Automatic negative pressure ink supply, automatic car lifting, automatic positive pressure cleaning, automatic moisturizing, sprinkler anti-collision system.
Rip Software	Neostampa / Texprint
Main Ink Tank	10L
Belt System Introduction	Automatic drying and winding system, automatic cleaning guide belt system, anti-pressure roller print, synchronous pressure roller.
Dryer Unit	Single-layer tunnel oven (optional steam configuration)
Ink Type	reactive/disperse/acid/pigment ink
Interfacepower Voltage	Optical fiber
Print Head Height	Height adjustable 1.5-30mm,to adapt medium of different thickness
Power Voltage	380V, 3L+N+G(with independent reliable effective earth wire)
Power Frequency	50HZ/60HZ +1HZ
Power Consumption	Print 16KW, Oven 20KW (steam oven 4KW)
Workshop Condition	Temperature:20-30°C, humidity: 50-65%

Effective Width			
Size	1800mm	2200mm (Effective width2180mm)	2600mm
Printer	4165mm*2200mm*1600mm (L*W*H)	4615mm*2200mm*1700mm (L*W*H)	5195mm*2200mm*1750mm (L*W*H)
Dryer		2555mm*2150mm*1467mm (L*W*H);	
Ink Cabinet		1900mm*700mm*1000mm (L*W*H)	
Weight	Printer:3100Kg;	Printer:3800Kg;	Printer:5000Kg;



FD-5328

420m<sup>2</sup>/h  
MAX PRINTING SPEED



Printer Model	FD-5328
Print Head	Epson I3200-A1    Print heads : 8    Printing accuracy: 3200DPI Automatic cleaning,automatic flash spray moisturizing function.
Print Speed	8PCS: 1pass 420m <sup>2</sup> /h    2pass 210m <sup>2</sup> /h
Ink Type	Sublimation ink    Color: CMYK
Print Width	3200mm
Print Media	Sublimation paper
Media Transfer	Inflatable shaft automatic retracting system
Drying Method	External intelligent air-heat integrated dryer:
Moisturizing mode	Fully sealed automatic moisturizing and cleaning
RIP Software	Support Maintop6.0, photoprint, ONYX, NeoStampa and other software. Standard Maintop6.0
Image Format	JPG, TIFF, EPS , PDF etc
Work Environment	Temperature:18 -30℃    Humidity: 35%-65%
Power	Input voltage: 210-230VAC 50\60HZ 10A Printing system: 1500W Drying system: Maximum power:10800W
Machine Size	Appearance size: 5140*1350*1850mm Packing size: 5280*1180*1770mm

Sublimation Inks



Product Advantage

- Non-toxic and environmentally friendly, direct contact with the skin, in line with the OEKO-TEX100 standard does not contain AEPO (textile banned ingredients)
- The use of microfiltration technology, ink particles less than 0.2um.
- Unique particle stabilization sorting technology, ink system dispersion and stability, greatly improving the problem of product settlement and discoloration
- Good fluency, and strive to solve the industry's common problem of oblique spray
- High color development rate, ink consumption more economical, effective savings in printing costs
- For sensitive models, solve the problem of bubbles and stability of thermal transfer ink commonly exists
- Washing resistance, fastness to 4-5, no color change
- Small differences between batches, meet international standards, achieve perfect reproduction of the product output effect at different times
- Industrial head low grammage solution to solve the problem of fast-drying printing paper, printing speed is greatly improved, comparable to industrial printing
- The color is bright and dense without staining, and the transfer effect is more delicate and natural, with clear layers and higher image reproduction

# Heat Transfer Paper

## Product Specification

Gram weight	29 Gsm
Wide width	0.914m/1.115m/.m/1.3m/ 1.5m/ 1.52m/1.6m/ 1.62m/ 1.7m/1.8m /1.82m/ 2.0m /2.6m/3.2m
Length	100m/150m /200m/300m/ 400m/ 500m /800m/ 1000m/3000m/5000m



## Product Advantage

- Factory Direct Sales ..... Leave out the intermediate link, High cost-effective
- Favorable Price ..... Professional manufacturing , free sample placement can be provided
- Fast Drying ..... Fast drying, Making your production fast and convenient
- High Transfer Rate ..... High transfer rate and high color reproduction
- Green Materials ..... Material to meet the national environmental protection requirements
- Stable Quality ..... The craft strives for perfection and careful control

1

Environmentally friendly and no pollution to the environment

2

High color reproduction can adapt to different brands and concentrations of ink

3

Fast ink absorption, while drying speed and transfer efficiency are significantly improved

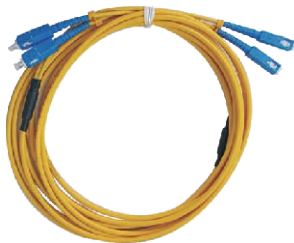
4

Different grammage of paper can be adapted to different working speeds of printers, saving production costs

# Spare Parts Wholesale



13200-A1



Fiber optic cable



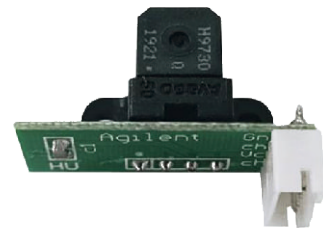
Ink pump



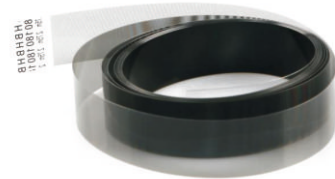
PC ink stack cap



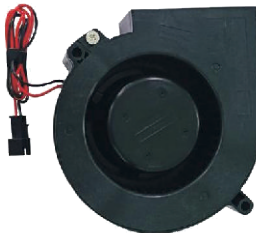
4720 Head cable



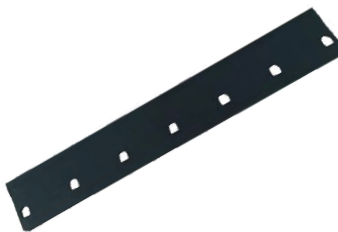
Raster decoder



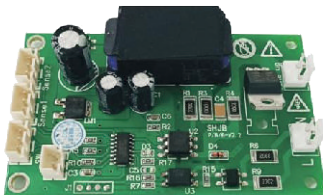
Grating



Paper fan



5193 scraper



Tension take-up reel



Ink cartridge





**MEXUM TEXINK PVT. LTD.**

**Plot No-1125-26, Ground Floor, Laxmi Textile Park, Sachin, GIDC, Surat, Gujarat-394230**

**M: +91 98251 08383 | E-mail : [sales@mexum.in](mailto:sales@mexum.in) | [www.mexum.in](http://www.mexum.in)**